

CX6040D

X-Ray Inspection System



Dual-view X-ray inspection system • Widely used in a variety of applications



HIGH IMAGE QUALITY

Wire resolution of 40 AWG and steel penetration of 38mm

ENVIRONMENTALLY SOUND

Meets all published international health and safety standards

AUTOMATIC DETECTION

Customizable capabilities for explosives, narcotics, weapons, and contraband

STORAGE

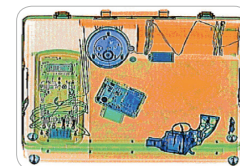
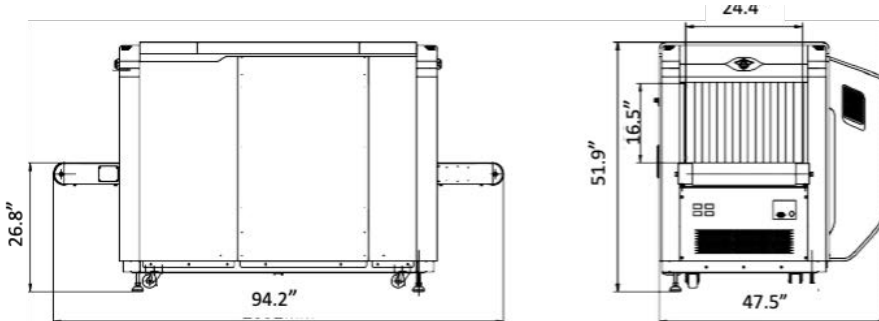
Images saved in general format (i.e. BMP, JPG, PNG) for seamless transfer to storage devices

ERGONOMIC DESIGN

Keyboard and user interface empower the operator to quickly manipulate images and view multiple angles and sizes

BUILT-IN DIAGNOSTIC FACILITY

Enhances efficiency of maintenance and service programs



The STVS CX6040D is a next-generation dual view X-ray inspection system for hand-held baggage, small checked luggage and parcels.

Employing a dual-view design, each image is shown on a dedicated monitor so that dangerous objects and contraband hidden beneath overlapping areas are more likely to be found and located. The tunnel dimensions of 24.4in width and 16.5in height are optimized for baggage inspection at airports, government installations, railway stations, customs, ports, and stadiums. Combined with unsurpassed operation ergonomics, its reliability and safety facilitates excellent image quality and advanced material classification. Customizable to meet localized security challenges, the optional smart imaging system for CX6040D leverages machine learning and artificial intelligence (AI) to develop a scalable library of identifiable threats and contraband based on shape.

TECHNICAL SPECIFICATION

Dual-view Imaging	Both vertically and horizontally projected images
Tunnel Dimensions	24.4 in (W) x 16.5 in (H)
Conveyor Speed	0.2m/s
Conveyor Height	26.8 in
Max. Load	353 lbs.

IMAGE PERFORMANCE

Wire Resolution	40AWG
Steel Penetration	38mm

IMAGE PROCESSING SYSTEM

Image Enhancement	Color / BW, negative, high / low penetration, organic / inorganic stripping, general enhancement, multiabsorptivity, and suspect material enhancement
Material Classification	According to atomic number signatures
ROI & Zoom	Step / step less zoom, enlargement up to 32 times
Image Recall	Preceding images recallable
Image Storage Capability	Up to 50,000 images

INSTALLATION DATA

Dimensions	94.2 in (L) x 47.5 in (W) x 51.9 in (H)
Weight	2,204 lbs
Operating Temperature / Humidity	32°F ~ +104°F / 5%~95% (non-condensing)
Storage Temperature / Humidity	-40°F ~ +140°F / 5%~95% (non-condensing)
Power Supply	220VAC / 110VAC (-15%~+10%), 50Hz / 60Hz
Power Consumption	1.2kVA

MISCELLANEOUS FUNCTIONS

Standard Functions	Time / date display, counters, user management, system-on / X-rayon timers, power on self-test, builtin diagnostic facilities, dual-direction scanning, system log, system standby and training, etc.
Other Functions	Explosives/narcotics detections, high-density area alert, threat image projection (TIP)

HEALTH AND SAFETY

X-ray Leakage	Less than 1 μ Gy / h (5cm from the housing) complying with all published international standards
Film Safety	Guaranteed for high speed film up to ASA/ISO1600 (33DIN)

Note: Image performance specifications are based on test materials complying with CAAC standard.