

CX7555BI

X-Ray Inspection System



Dual-energy X-ray inspection system • Widely used in a variety of applications

HIGH WIRE RESOLUTION

40AWG and steel penetration up to 38mm

COMPLIANT

Complies with all international safety and health standards: X-ray leakage around the equipment is close to natural background

EXPLOSIVES AND NARCOTICS DETECTION

Automatic according to atomic number signatures

THREAT IMAGE PROJECTION (TIP)

Practical solution for operator performance monitoring and training, reducing the probability of threat misses

COMPREHENSIVE IMAGE FUNCTIONALITY

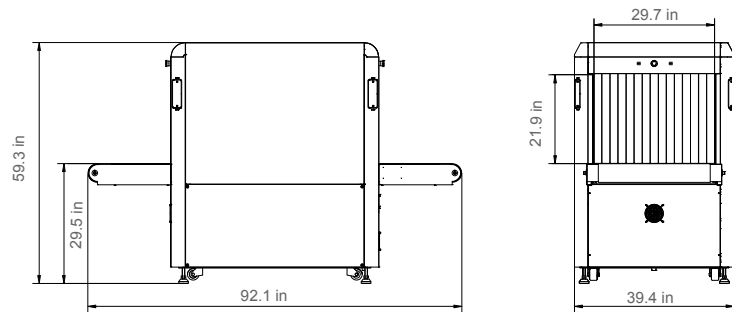
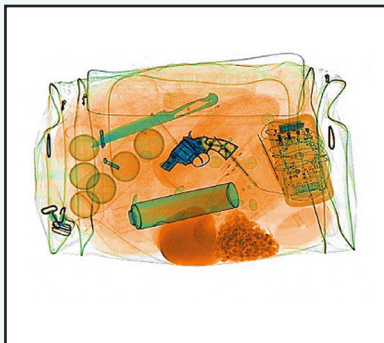
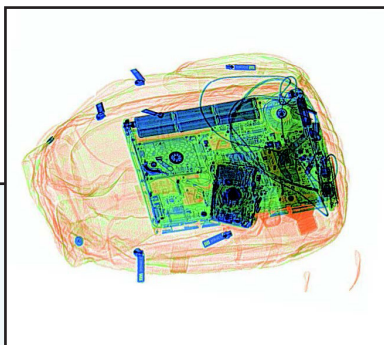
Supports stepwise, continuous and magnifier functions to enlarge images that can be saved and/or transferred to external storage in general image formats including BMP, JPG, GIF and TIFF

ERGONOMIC

Keyboard and user interface design ensure efficiency

MODULAR DESIGN

Full built-in diagnostic facilities for streamlined service and maintenance



The STVS CX7555BI is an advanced dual-energy X-ray inspection system designed for inspection of briefcases, hand-held baggage, and parcels in numerous facilities including at airports, customs, railway stations, ports, events, government offices, and stadiums. With tunnel dimensions of 29.7 inches wide and 21.9 inches high, CX7555BI enables the operational flexibility, reliability, and efficiency to enhance the screening process of any organization.

In addition, the superior image quality and advanced materials classification of CX7555BI enables optional automatic explosives and narcotics detection capabilities.

Advanced material classification: orange for organic, blue for metal and green for mixed material. Automatic detection of drugs.

TECHNICAL SPECIFICATION

Tunnel Dimensions	29.7 inches (W) x 21.9 inches (H)
Conveyor Speed	0.20m/s
Conveyor Height	29.5 inches
Max. Load	352.74 lbs.

IMAGE PERFORMANCE

Wire Resolution	40 AWG
Steel Penetration	38mm
Display Resolution	1280 x 1024

IMAGE PROCESSING SYSTEM

Image Enhancement	Color/BW, negative, high/low penetration, organic /inorganic stripping, general enhancement, multi-absorptivity, and suspect material enhancement
Material Classification	According to atomic number signatures
ROI & Zoom	Step/stepless zoom, up to 32 times enlargement
Image Recall	Preceding images recallable
Image Storage Capability	Up to 50,000

MISCELLANEOUS FUNCTIONS

Standard Functions	Time/date display, counters, user management, system-on/X-ray-on timers, power on self test, built-in diagnostic facilities, dual-direction scanning, system log, system standby and training, etc.
Other Functions	Explosives/narcotics detections, high-density area alert, threat image projection (TIP)

HEALTH AND SAFETY

X-ray Leakage	Less than 1 μ Gy / h (5cm from the housing) complying with all published international standards
Film Safety	Guaranteed for high speed film up to ASA/ISO1600 (33DIN)

INSTALLATION DATA

Dimensions	91.1 in (L) x 39.4 in (W) x 59.3 in (H)
Weight	1,565.28 lbs.
Storage Temperature / Humidity	-40°F ~ +140°F / 5% ~ 95% (non-condensing)
Operating Temperature / Humidity	32°F ~ +104°F / 5% ~ 95% (non-condensing)
Power Supply	220VAC/ 110VAC (-15% ~ +10%) 50 Hz/60Hz 3Hz
Power Consumption	1.0kVA