

R100

Backscatter Inspection Robot

Inspection robot for vehicles and cargo



SMART, FLEXIBLE, MOBILE

R100 is equipped with obstacle avoidance technology, 360-degree rotation, and a flexible platform. It can be rapidly moved nearby or be transported by vehicle to further locations.

Integrating contactless backscatter imaging technology with a user-friendly robot, R100 generates real-time images to find concealed contraband.

TARGETED CONTRABAND

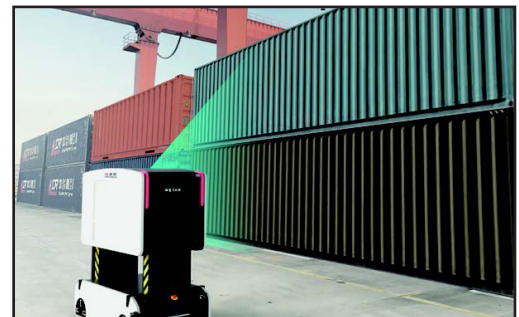
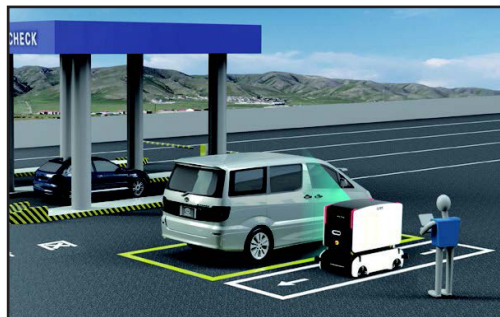
Accurately detects hidden contraband including drugs, explosives, and weapons concealed in moving or stationary vehicles and cargo.

SCAN MODES

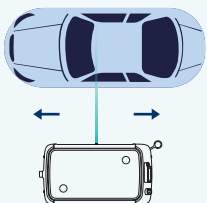
Automatic mode: one-click scan; Manual mode: fully controlled by operator

APPLICATIONS

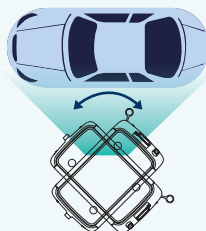
Vehicle inspection at anti-drug, border, road and other checkpoints; empty container inspection at customs and port terminals; random vehicle and item inspection at secure locations.



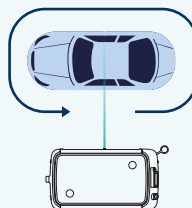
AUTOMATIC SCAN MODES



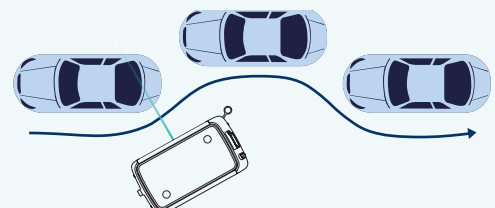
1 Shuttle mode



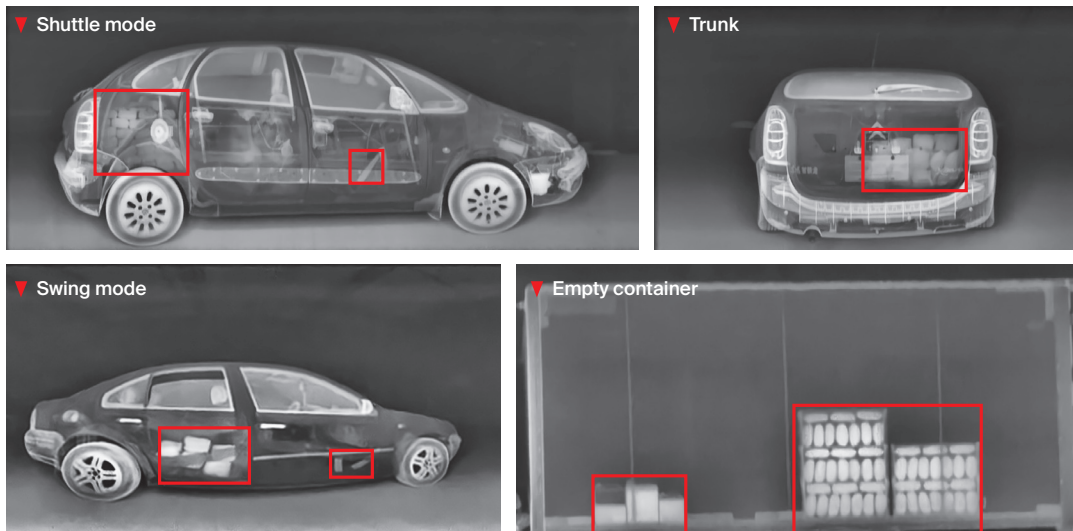
2 Swing mode



3 Surrounding mode



4 Drive-along mode (Semi-automatic)



VR100

TECHNICAL SPECIFICATION

X-ray source	X-ray tube
X-ray energy	160 keV
Penetration	6 mm steel
Dose per scan	0.1 μ Sv (typical)
Scanning speed	3.9 ~ 19.7 in/s
Scanned height	0 ~ 78.7 in (19.7 in from the surface of the scanner) 0 ~ 98.4 in (39.4 in from the surface of the scanner) 0 ~ 118.1 in (59.1 in from the surface of the scanner)
Lifting height	0 ~ 23.62 in
Max. running speed	1 m/s
Dimensions	74.8 in (L) 44.9 in (W) 59.1 in (H)
Weight	2,645.54 lbs.
Battery capacity	14 kWh
Charge time	6 hrs.
Operating time	8 hrs. (50% duty cycle)
Operation temperature	-4°F ~ +113°F
Storage temperature	-13°F ~ +131°F
Humidity	0% ~ 99% (non-condensing)