

ThermalScan

Infrared Temperature Screening System



Easy to deploy, unpack and operate • Cost-effective Integrated Solution



BINOCULAR THERMAL CAMERA



TRIPOD



BLACKBODY



ALL IN ONE PC

MEASURE TEMPERATURES WITHOUT STOPPING

ThermalScan combines advanced Infrared thermal and visible light imaging technologies into a contactless temperature measurement and screening solution. Powered by deep learning algorithms and proprietary AI, ThermalScan accurately locates individual face positions while avoiding the influence of irrelevant heat sources.

ThermalScan is optimized to meet the growing needs of small and medium-size facilities including Correctional Facilities, Restaurants, Convenient stores, Hotels, Offices, and Religious organizations.



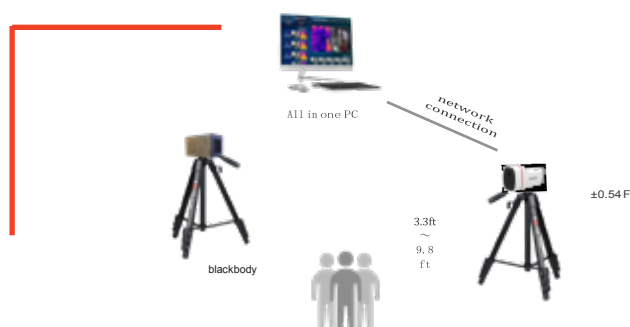
STABLE INTELLIGENT TEMPERATURE MEASUREMENT

ThermalScan accurately focuses on human faces, including with protective masks, while avoiding the influence of irrelevant heat sources (i.e. a coffee cup) to measure facial temperature quickly, accurately, and on the fly. Leveraging deep learning algorithms, ThermalScan automatic distance compensation ensures accuracy by continuously adjusting as distances change.



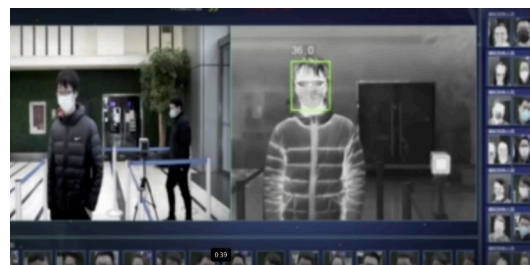
SCALABLE THROUGHPUT WITHOUT STOPPING

ThermalScan can screen two people simultaneously without requiring either person to stop and wait. Measuring from a safe distance from 3.3 ft to 9.8 ft with no contact, ThermalScan ensures reduced risk of disease infection **while accurately measuring the temperature of up to 50 people per minute.**



ACCURATE AUTOMATIC TEMPERATURE CALIBRATION

Automatic temperature calibration according to the environment achieves a high temperature measurement accuracy of (+)(-)0.54 F, without manual operation.



DATA SECURITY

ThermalScan immediately auto deletes images of individuals not flagged as having an elevated temperature. For those that do measure as being elevated, the system can temporarily hold the image for verification and identification.

THERMAL SCAN

TECHNICAL SPECIFICATION

Infrared Camera Resolution	256 x 192
Field of View	42° x 32° (H x V)
Focal Length	.2 inch
Measurement Ranges	86°F – 113°F
Measurement Distance	3.3 feet – 9.8 feet
Measurement Accuracy	±0.54F
Efficiency	2 people at the same time
Visible Camera Resolution	1920 x 1080
Operation Temperature	32°F – 104°F
Operation Environment	Indoor

* ThermalScan is not intended, nor designed to diagnose or detect medical conditions. Including, but not limited to, coronavirus or other infections.